

Silicium THREE-in-ONE



Energy saving



Electric inertia radiators



Stand-alone

Flexibility in any space

Individualised heating system with easy room temperature management.

Patented system that combines convection, radiation and heat accumulation to **effectively reduce the consumption.**

Open window detector to stop performance when a window is open.

Three versions in only one model: Stand-alone, bathroom heater with towel bar and wall heater. Double insulation, Class II, for **extra safety.**

Individualized heating system with easy room temperature management.

Manufactured with external **DUAL-KHERR** silicon stone inertia panel **to stabilize temperature and reduce consumption.**

It includes the latest technology in energy restriction in two options of management systems. Fully 24/7 programmable version or simple timer version. Both including a TRIAC control manager that reduces the flow of electric consumption.



PRO Control manager

- New HCC control system based on PID technology and TRIAC interfaces.
- Built-in electronic ambient thermostat.
- Intuitive and user friendly LCD display with safety lock.
- Working performance selector: Auto mode or manual mode.
- Weekly / daily programmer.
- Open window detector.

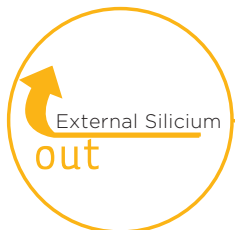


Optional TECH Control manager

- HCC control system based on PID technology and TRIAC interfaces.
- Built-in electronic ambient thermostat.
- Intuitive and easy digital display with safety lock.
- Daily timer with advance functions.
- Open window detector.



Technical features



External heat accumulation Stone panel
DUAL-KHERR



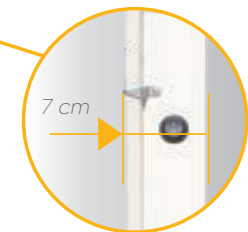
Stainless steel freestanding support suitable to be fitted also as a towel bar on bathroom radiator mode.



Smart Pro control

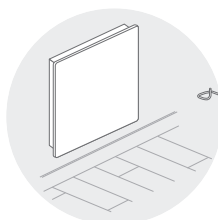


Homogeneous temperature and energy restriction with HCC and TRIAC management

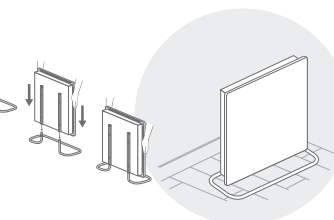


Slim design, Powder coated steel structure.

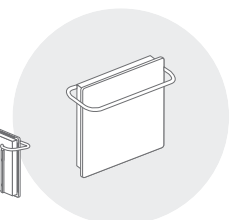
One single device,
 Three different performances:



Wall radiator



Stand-alone radiator



Bathroom heater

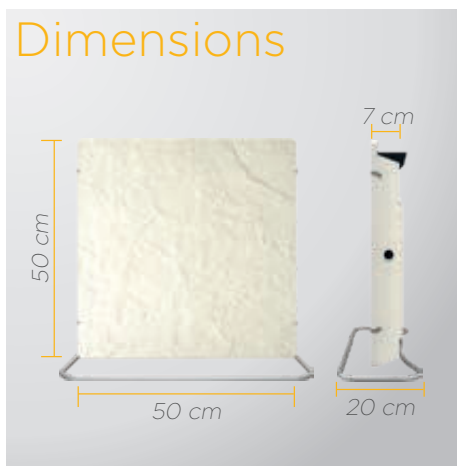


Wall fitting option



Bathroom heater option

Dimensions



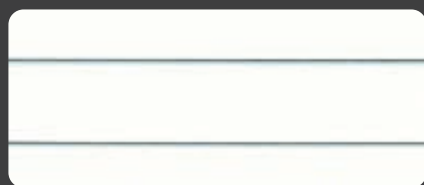
Silicium THREE-in-ONE Features

Voltage	230V / 125V
Frequency	50 Hz / 60 Hz (as per version)
Input	1000 W. (2000 W also in Pro version)
Connecting plug	Double pole, 15 A / 125-250 VAC
Safety thermostat	Automatic rearm. Range 0° - 90°
Electronic room thermostat	Range 5°C to 30°C (as per version)
Electric protection	Class II
IP protection	IP 24
Fitting system	Floor Stand-alone

Format	Power (W)	Packaging dimensions (cm)	Weight (Kg)	Units per pallet*	
				FTL	LTL
Square	1000/2000	60x20x62	13	27	22

*FTL: Full truck loads. LTL: Less than a truck loads

Recommended finishes for Silicium THREE-in-ONE models



Classic



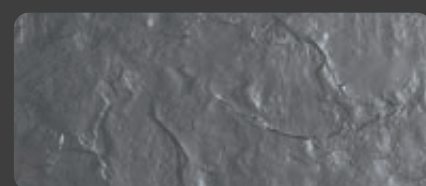
Terra Limestone



White Cashmere - Mimetic



White slate



Black slate

White cashmere finish can be painted in any colour you may wish if you add a coating for waterproof surfaces that can be found in any painting shop.